
Annual Report

2021/2022

BREMER COUNTY HEALTH DEPARTMENT

403 3rd Street SE
Waverly, IA 50677
(319) 352-0082

Department Profile

Mission

The Bremer County Health Department promotes, protects, and preserves health through leadership, service, education, prevention practices, and partnerships.

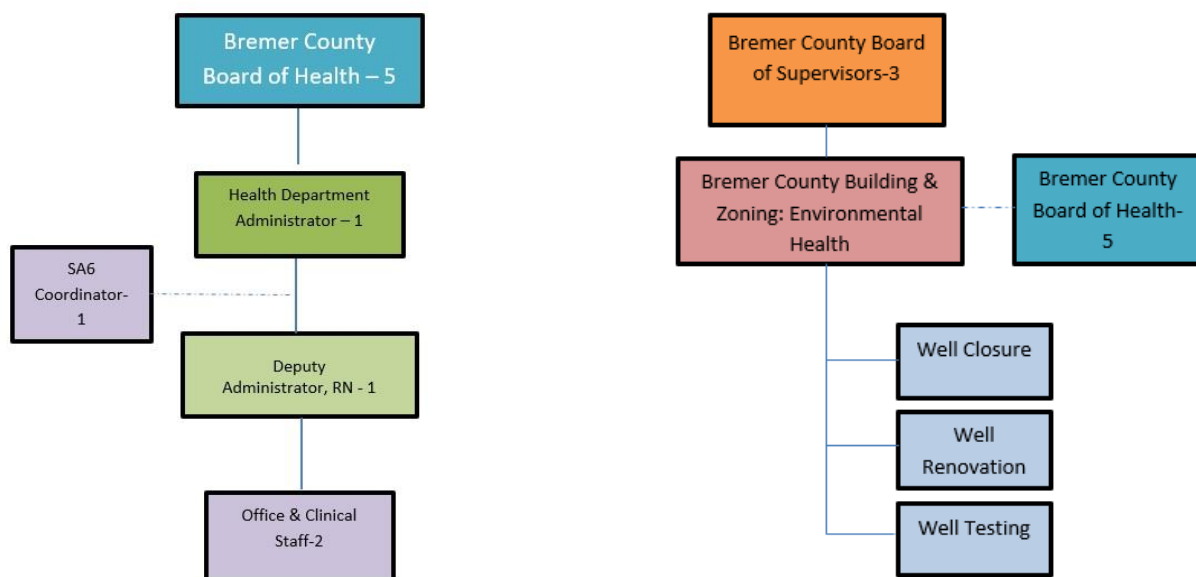
Vision

Building a Healthier Bremer County

Department Governance

The Bremer County Health Department (BCHD) is governed by the Bremer County Board of Health, which consists of five members who donate their time to Bremer County under the authority of [Chapter 137 of the Code of Iowa](#).

Board of Health	Board of Supervisors
Courtney Bochmann, DO	Ken Kammeyer
Amanda Gesme, LMHC	Dewey Hildebrandt
Dewey Hildebrandt	Tim Neil
Matt Sexton, DVM	
Sally Yungtum, RN	



Department Revenues

July 1, 2021-June 30, 2022

Revenue Category	FY22 YTD	% of Total
Emergency Response (COVID-19) Contracts	\$98,307.12	22.13%
Flu/Vaccines	\$5,549.00	1.25%
Foot Clinics	\$16,798.00	3.78%
Immunization Services Contract	\$10,020.00	2.26%
Local Public Health Services Contract	\$60,479.00	13.61%
Miscellaneous Reimbursement	\$1,145.48	0.26%
Public Health Emergency Preparedness Contract	\$139,880.11	31.48%
Private Insurance	\$1,778.50	0.40%
Private Pay for In-Home Services	\$3,334.24	0.75%
Transfer from Bremer County General Fund	\$107,000.00	24.08%
Total BCHD Generated Revenue	\$444,291.45	100%
Percent of BCHD Budget Received		81.54%

Department Expenditures

July 1, 2021-June 30, 2022

Expense Category	FY22 YTD	% of Total
Salary	\$204,211.72	46.03%
Employee Benefits	\$65,760.47	14.82%
Advertising	\$18,574.51	4.19%
Audit Services	\$2,400.00	0.54%
Background Checks	\$205.00	0.05%
Board of Health Expenses	\$403.20	0.09%
Data Processing Software/Equipment	\$80,548.15	18.16%
Document Disposal	\$1,308.15	0.29%
Due/Memberships	\$1,000.00	0.23%
Educational/Training	\$16,287.58	3.67%
Electric Light & Power	\$2,417.27	0.54%
Employee Mileage	\$2,784.50	0.63%
Fuels	\$600.62	0.14%
Home Health Insurance Overpayments	\$5,542.68	1.25%
Insurance-Liability & Property	\$4,854.73	1.09%
Medical & Lab Supplies	\$8,892.32	\$0.02
Medical-Pre. Emp. Physical	\$760.00	0.17%
Natural & LP Gas	\$1,168.50	0.26%
Office Supplies	\$11,619.31	2.62%
Postage	\$92.48	0.02%
Telephone & Internet	\$5,383.27	1.21%
Vaccines	\$5,977.03	1.35%
Vehicle Repair	\$109.14	0.02%
Workmens' Comp. Insurance	\$2,727.00	0.61%
Total BCHD Generated Expense	\$443,627.63	100%
Percent of BCHD Budget Used		94.81%

Non-Population Health

Foot Clinics

The BCHD provides foot clinics to individuals 55 years of age or older and/or individuals who are significantly disabled and unable to manage their foot care. Clinics are offered once a month in Denver, Plainfield, Readlyn, Sumner, Tripoli, and Waverly.

FY22 Foot Clinic Statistics	
Number of Visits	436
Number of People Served (Unduplicated)	99

Home Health

In the fiscal year 2022 (FY22), the BCHD provided decertified home care aide services (personal care and homemaking) from July 1, 2021-April 9, 2021. This program ended on April 9, 2021, due to staff changes, lack of referrals, changes to [Iowa Administrative Code Chapter 80](#), and a priority to focus on population health versus non-population health services.

FY22 Home Health Statistics-Total Visits by Discipline	
Discipline	Visits
Personal Cares	166
All Other Services (Homemaking)	72

FY22 Home Health Statistics-Total Patients by Discipline	
Discipline	Patients
Personal Cares	2
All Other Services (Homemaking)	8

Non-Population Health

Loan Closet

The BCHD offers a variety of medical equipment for individuals to loan out for up to 5 months.

FY22 Loan Closet Statistics	
Number of People Served	26

Population Health

The Bremer County Board of Health, BCHD Administrator, and BCHD staff work together to make decisions regarding public health services through the use of the Community Health Assessment and Health Improvement Plan (CHA-HIP) process. Programming is directed toward meeting the goals of the CHA-HIP which targets health risk factors among residents of Bremer County. BCHD exists to provide essential public health services to individuals in Bremer County.

CHA-HIP Health Targets

Promote Healthy Living

- Decrease Addictive Behaviors
- Decrease Chronic Disease
- Increase Healthy Behaviors

Prevent Injuries

- Decrease Unintentional Injury

Protect Against Environmental Hazards

- Identify Water Quality Concerns
- Identify Air Quality Concerns

Prevent Epidemics and the Spread of Disease

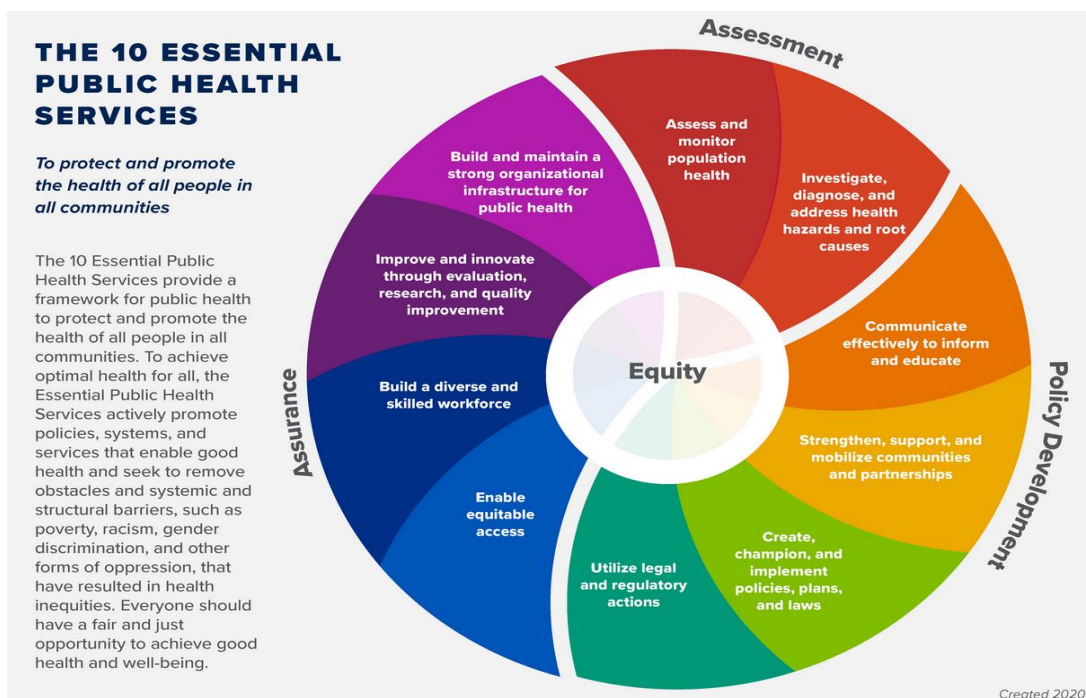
- Decrease Disease Spread
- Increase Vaccination Rates

Prepare for, Respond to, & Recover from Public Health Emergencies

- Decrease Risk of Injury & Death by Increasing Individual Preparedness

Strengthen the Health Infrastructure

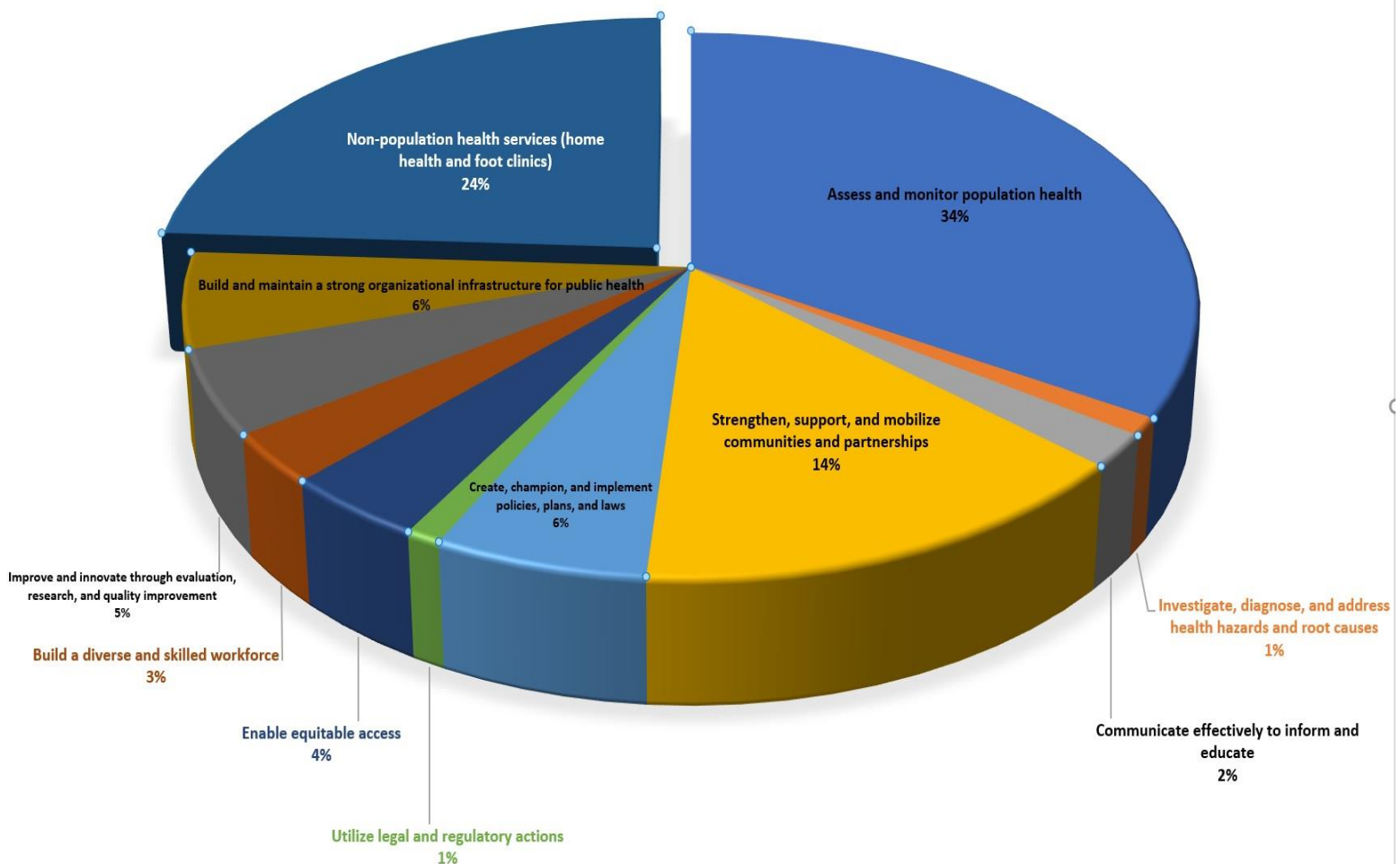
- Decrease Healthcare Burden



Population Health

BCHD staff spent time in many different areas to support areas of health targets that promote healthy living, prevent injuries, protect against environmental hazards, prevent epidemics and the spread of disease, prepare, respond, and recover from public health emergencies, and strengthen the public health infrastructure.

Here is a break-down of the average percent of the time utilized within the BCHD in FY22 based on the 10 Essential Public Health Services:



**All Bremer County Health Department programs
can be reached by phoning (319) 352-0082**

Visit us online at:

https://www.bremercounty.iowa.gov/departments/health_department/index.php

Find us on Facebook at:

<https://www.facebook.com/bremercountyhealthdepartment/>

